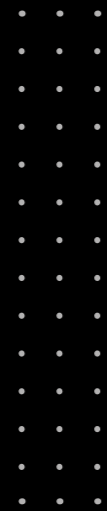


FLYBRIDGE & HARD TOP COLLECTION

E52S

EVOLUZIONE



E52S

EVOLUZIONE



E52S
EVOLUZIONE



E52S
EVOLUZIONE



E52S
EVOLUZIONE



E52S
EVOLUZIONE



E52S
EVOLUZIONE

**TECHNICAL SPECIFICATIONS
& LAYOUTS**

LENGTH OVERALL / LUNGHEZZA FUORI TUTTO
15,82 m ca. / 51 ft 11 in approx.
BEAM MAX / LARGHEZZA MASSIMA
4,67 m ca. / 15 ft 3 in approx.
DRAFT (INCL. PROPS) / PESCAGGIO ALLE ELICHE
1,25 m ca. / 4 ft 1 in approx.
HEIGHT ABOVE WATERLINE / ALTEZZA SOPRA LINEA GALLEGGIAMENTO
5,1 m ca. / 16 ft 8 in approx.
DRY WEIGHT / PESO CON MOTORI
19750 kg ca. / 43541 lbs approx.
PASSENGERS AND WEIGHT / PORTATA PERSONE MAX E PESO
12 (1 140 kg / 2513 lbs)
FUEL CAPACITY / CAPACITÀ SERBATOIO CARBURANTE
1570 l ca. / 345 UK gal approx. / 415 US gal approx.
FRESH WATER CAPACITY / CAPACITÀ SERBATOIO ACQUA
540 l ca. / 119 UK gal approx. / 142 US gal approx.
SUITES - CABINS / CABINE
3
BATHROOMS / BAGNI
2
GUEST CABIN OR CREW CABIN / CABINA EQUIPAGGIO
1
SLEEPING ACCOMODATIONS / POSTI LETTO
6+1 Crew
HULL / CARENA
Aldo Cranchi
DESIGN / PROGETTO
Centro Studi Ricerche Cranchi
ART DIRECTION / ART DIRECTION
Christian Grande
CE CATEGORY / CATEGORIA DI PROGETTAZIONE
B

 **CRANCHI** RECOMMENDED COLORS / COLORI RACCOMANDATI
Atelier



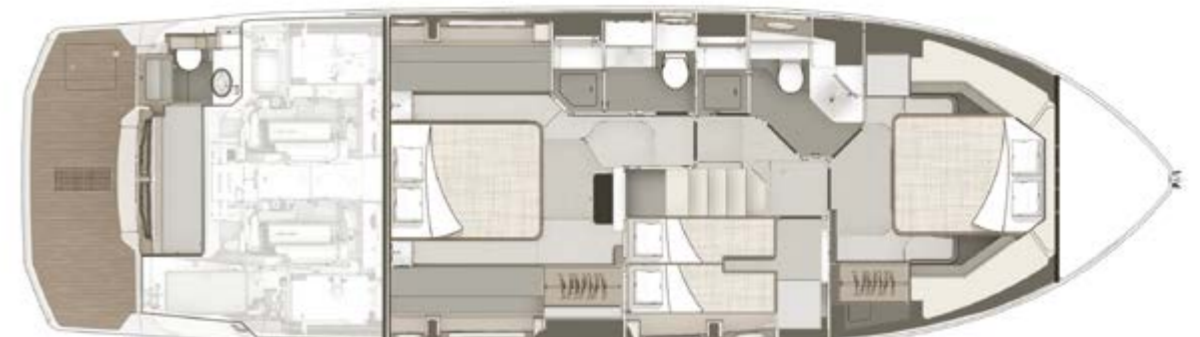
SPORTBRIDGE



MAIN DECK



LOWER DECK





SUSTAINABLE CHARTERS INC.

SUSTAINABLE CHARTERS INC.
San Lorenzo, Makati City 1228, Philippines
M: +63 917 852 8858 , M: +63 917 533 2673 | T: 63 2 8824 3360
contact@sustainablecharters.com
www.sustainablecharters.com
www.cranchi.ph



CRANCHI®

Boatbuilder since 1870



CANTIERE NAUTICO CRANCHI® S.p.A.

AWARDS



Powered by

**VOLVO
PENTA**

